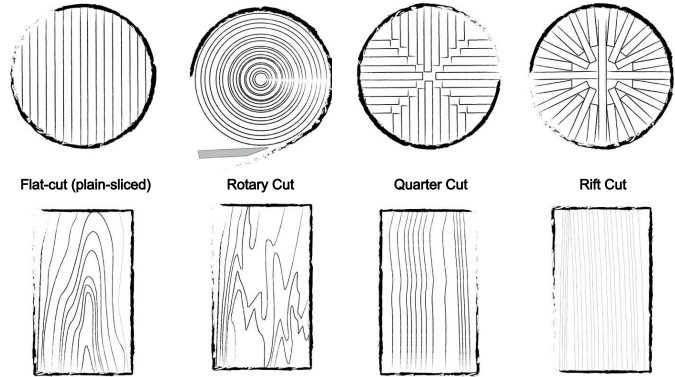


### STOCK WOOD DOORS



### Manufacturers:



### STOCK WOOD DOOR INVENTORY

GRADE	FINISH	COLOR	SPECIES	VENEER CUT	FIRE RATING	NOMINAL SIZES						MANUFACTURER		
						3068	3070	3080	3090	3090	3090			
Paint Grade	Unfinished		Natural Birch	Rotary Cut		3068	3070					Masonite		
5-Ply Architectural Grade <small>Does not meet NAUF requirement for LEED or AEGB.</small>	Unfinished		White Birch	Rotary Cut	20 min	3068	3070	3080	3090			VT Industries		
			White Birch	Rotary Cut	90 MIN	3068	3070					VT Industries		
			Maple	Plain Sliced	20 min		3070					VT Industries		
			Red Oak	Plain Sliced	20 min		3070					VT Industries		
			White Oak	Plain Sliced	20 min		3070					VT Industries		
	Pre-Finished	Brown	Natural Birch	Rotary Cut	20 min	2068	2070	2668	2670	2868	2870	VT Industries		
			<i>Our most popular color available in many sizes, some of them pre-machined.</i>						3068	3070	3670		3080	3090
								4068	4070	4090				
		Clear	White Birch	Rotary Cut	90 MIN	3068	3070					VT Industries		
	Mahogany stain	Natural Birch	Rotary Cut	20 min	3068	3070	3080				VT Industries			
	Unfinished		Natural Birch	Rotary Cut	20 min				3090	3010	4090	Eggers Industries		
			Cherry	Plain Sliced	20 min				3090		4090	Eggers Industries		
			Mahogany	Plain Sliced	20 min			3070	3090		4090	Eggers Industries		
			White Maple	Plain Sliced	20 min			3070	3090		4090	Eggers Industries		
			Red Oak	Plain Sliced	20 min				3090		4090	Eggers Industries		
		White Oak	Plain Sliced	20 min				3090		4090	Eggers Industries			
		African Mahogany	Quarter Sliced	20 min				3090			Eggers Industries			
Pre-finished	Clear	Red Oak	Plain Sliced	20 min			3070		3090		Eggers Industries			
	Clear	White Maple	Plain Sliced	20 min			3070		3090		Eggers Industries			
	Clear	White Maple	Quarter Sliced	20 min			3070		3090		Eggers Industries			

### Commercial Door Surface Types

Depending on the style of commercial door, there are several broad categories of surface types to choose from. You will find variations on each of these, making for a wide range of options to meet just about any style or performance need.

- **Laminates:** Typically made of plastic bonded to a composite base, it is printed to look like real wood.
- **Veneers:** Thin pieces of wood glued directly onto the door core.

### Commercial Door & Hardware Terminology

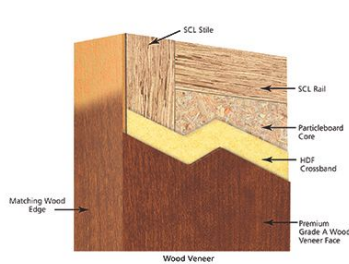
**Stile and Rail:** A model of door using stiles and rails either mitered or butted— corner joints welded and ground smooth— panel interlocks with stiles and rails and is provided with core or stiffeners—panel may be flush with (flush panel door) or recessed (recessed panel door) from faces of stiles and rails.

### STOCK WOOD DOORS

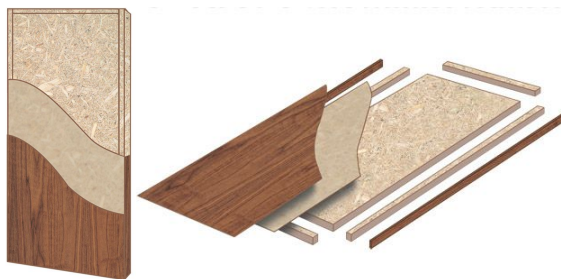
#### Manufacturers:



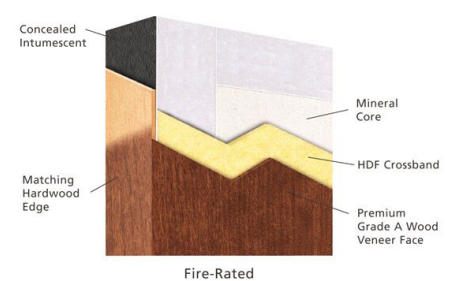
#### Particleboard Core (PC)



#### Structural Composite Lumber (SCL) Core



#### Mineral Core (MC)



### Commercial Door Core Types

Doors typically come as solid wood, hollow-core, or solid core. When it comes to commercial solid door cores, there are four main types:

- **Particleboard Core:** Ground-up raw wood glued together. It is durable, low cost, and widely available. Particleboard is suitable for most commercial construction.
- **Structural Composite Lumber (SCL) Core:** Strands of different types of small-diameter hardwood trees combined with special resins. It is more durable and heavier than particleboard.
- **Mineral Core:** A mix of non-combustible minerals used in fire-rated doors. They are very lightweight but require wood-blocking to hold screws for hardware.
- **MDF Core:** Glued wood fibers for a core that is more dense than particleboard. It makes a durable, budget-friendly choice.  
**(Non-stock)**

### Flush Wood Doors

Flush wood doors have a smooth, or flush, surface without any moldings. It is common for flush doors to be covered with ply, MDF board, or wood and finished with laminate or painted. They are often specified for hospitals, hotels, and schools. Flush doors are better sound insulators and tend to be more fire-resistant and pest resistant.

### Commercial Door & Hardware Terminology

**Beveled Edge:** The edge of a door which is not at a 90 degree angle to the face of the door (standard bevel is 1/8 inch in 2 inches)—narrow side of door is side in contact with stop of frame when door is closed.