



CLOSERS



DESIGN HARDWARE 116 Series Heavy Duty

[MFG WEBSITE](#)

116AL – Aluminum Painted

Meets ANSI A156.4 – Grade 1 Standards

UL Listed for “A” Label 3 Hour Fire Doors, UL10C Positive Pressure Rated Meets ADA requirements ANSI A117.1 Heavy Duty Cast Aluminum Closer Body with Rack & Pinion Construction Heat Treated Heavy Duty Steel Piston, Spindle & Spring

Adjustable Spring Power from Size 1-6 – Factory preset at size 3

Independent Latch & Sweep Speed Controls

Back Check Intensity Control Standard Staked Valves to prevent backing valves out too far

Plastic Pinion Cap & PA Bracket included

Molded Plastic Cover available separately

CTC Hole Pattern: 9 1/16” CTC Horizontally x 3/4” CTC Vertically 116 Template

2 7/8” projection without cover Minimum Top Rail: Regular Arm: 3 1/8” – Top Jamb: 1 7/8” – Parallel Arm: 5 3/4”

Machine screws & Thru Bolts, Wood screws & Self tapping machine screws included

Includes all screws and brackets for Regular, Top Jamb and Parallel Arm Installations

Accessories: Hold Open Arms, Heavy

CLOSERS

Duty Arms, Drop Plates, Extended Arms & more...
Limited Lifetime Warranty

DHW 116 AL CLOSER



SRP \$112

DHW 116 BZ CLOSER



SRP \$112



DESIGN HARDWARE 316 Series Heavy Duty

[MFG WEBSITE](#)

ANSI : Meets ANSI A156.4 – Grade 1 Standards

UL Listings : “A” Label 3 Hour Fire Doors, UL10C Positive Pressure Rated ADA Compliance : Meets ADA requirements ANSI A117.1

Closer Body : Heavy Duty Cast Aluminum Closer Body, Rack & Pinion Const.

Piston, Spindle, Spring : Heat Treated Heavy Duty Steel Piston, Spindle & Spring

Spring Sizing : Adjustable Spring Power from Size 1 to 6 – Preset at size 3

Speed Controls : Independent Latch & Sweep Speed Controls

Back Check : Back Check Intensity Control Standard

CLOSERS

Valves : Staked Valves to prevent backing valves out too far
Covers : Molded Plastic Cover included – Metal cover included with US3 & US26 finish

CTC Hole Pattern : 12” CTC Horizontally x 3/4” CTC Vertically
Projection : Slim 2 1/8” projection with cover installed

Minimum Top Rail : 3 1/2” – Top Jamb: 2 1/4” – Parallel Arm: 5 1/4”
Fasteners : Thru bolts with machine screws, Wood screws

& Self tapping machine screws included

Mounting Styles: Includes all screws and brackets for Regular, Top Jamb and Parallel Arm Installations

Accessories: Hold Open Arms, Heavy Duty Arms, Drop Plates, Extended Arms & more...

Warranty : Limited Lifetime Warranty

DHW 316 AL CLOSER



SRP \$140

DHW 316 BZ CLOSER



SRP \$140

DHW 316R AL CLOSER w/RETROFIT PLATE



SRP \$176

CLOSERS



DESIGN HARDWARE 416 Series Heavy Duty

[MFG WEBSITE](#)

ANSI : Meets ANSI A156.4 – Grade 1 Standards

UL Listings: : For “A” Label 3 Hour Fire Doors, UL10C Positive Pressure Rated
ADA Compliance : Meets ADA requirements ANSI A117.1

Closer Body : Heavy Duty Cast Iron
Closer Body with Precision Rack & Pinion Construction

Piston & Spindle : Heat Treated Steel
Piston & Spindle with Needle Bearings for Smooth Operation

Springs : Heat Treated Heavy Duty
Tempered Spring for up to 250lb door
Spring Sizing : Adjustable Size 1 to 6 – Factory set at size 3

Speed Controls : Independent Latch & Sweep Speed Controls

Back Check : Adjustable Back Check
Intensity Control Valve

Valves : Staked Valves to prevent
backing valves out too far

Standard Cover : Molded Plastic
Cover included for finished look
Optional Cover : US26D Metal Cover
available separately

CTC Hole Pattern : 2 holes 1” CTC, 3”
CTC horizontal x 2 1/4” CTC vertical
Projection : 2 1/4” projection with
cover installed 416 template drawing
Minimum Top Rail : Regular Arm: 3
3/4” – Top Jamb: 1 1/4” – Parallel
Arm: 5 3/8”

Fasteners : Thru bolts with machine
screws, Wood screws & Self tapping
machine screws included

CLOSERS

Mounting Styles : Includes all screws
and brackets for Regular Arm, Top
Jamb and Parallel Arm Installations
Accessories: Hold Open Arms, Heavy
Duty Arms, Drop Plates, Extended
Arms & more...

Warranty : Limited Lifetime Warranty

DHW 416 AL CLOSER



SRP \$210

DHW 416 BZ CLOSER



SRP \$210



DORMA 8600 Series door closer

[MFG WEBSITE](#)

Grade 1 Surface Applied Door Closer
The 8600 door closer series is a non-
handed surface applied door closer
with adjustable spring power and
backcheck positioning adjustment. It
provides the flexibility needed to
meet the many demands of
commercial and institutional
applications, including ADA barrier-
free accessibility requirements.

- Door closer ANSI/BHMA Grade 1 certified.
- Adjustable spring sizes and power
- Meets barrier-free requirements

CLOSERS

- Adjustable backcheck
- Backed by 25-year warranty

DOR 8616 AF86P COV SNB1 689



SRP \$364

DOR 8616 AF86P COV SNB1 695



SRP \$364

DOR 8616 AF86P FC SNB1 689



SRP \$370

DOR 8616 AF86P FC SNB1 695



SRP \$370



FALCON SC60A Series Closer

[MFG WEBSITE](#)

This light- to medium-duty closer is
designed for commercial applications
like a small boutique or office.

The SC60A Series is designed for
light- to medium-duty applications,
like a small business or office
building. It is intended for interior use
with aluminum storefronts and mixed-
use complexes. It mounts three ways



CLOSERS

and features the most common hole pattern in the door control industry, making it ideal for a variety of retrofit needs.

The SC60A Series features a single-piece cast aluminum body and a 1-3/8" heat-treated steel piston, a heat-treated pinion and staked valves. The SC60A Series standard door closer is certified ANSI/BHMA A156.4 Grade 1, is UL listed and is backed by a 10-year warranty.

FAL SC61A CLOSER RWPA ALUM



SRP \$171

FAL SC61A CLOSER RWPA 695



SRP \$171



FALCON SC70A CLOSER

[MFG WEBSITE](#)

Falcon SC70A Series heavy duty closers are built for applications that demand reliable door control and easy maintenance.

The SC70A Series closers are ANSI grade 1, ADA compliant and deliver tough performance. Choose the SC70A for interior or exterior doors in retail shops, restaurants, small offices, and many other high traffic

CLOSERS

applications.

Standard features

Fully adjustable sizes 1-6

Separate adjustable general speed, latch speed and backcheck

- Closer mounts hinge side, top jamb, or parallel arm when either the RW/PA or HW/PA arm is specified
- Non-handed for left or right swinging doors
- 1 1/2" diameter heat treated steel piston
- Double heat-treated pinion
- Universal screw pack for aluminum, hollow metal, and wood doors, includes self reaming and tapping screws. Staked valves
- Meets ANSI A117.1
- Listed ANSI/BHMA A156.4, grade 1
- UL listed and compliant to UL10C and UBC 7-2 (1997)
- Fast and easy installation
- 10-year warranty
- Available in aluminum, brass, dark bronze, and matte black

FAL SC71A FC CLOSER RWPA ALUM



SRP \$337



FALCON SC80A CLOSER

[MFG WEBSITE](#)

CLOSERS

The SC80A Series is a medium-duty closer made for light- to medium-duty applications, both interior and exterior.

It is ideal for side doors, closets and bathrooms in schools, retail shops, restaurants, and small office buildings.

The closer's adjustable design provides flexible installation and ADA compliance, including adjustable spring sizes and a non-handed design.

The SC80A Series also features 1-1/4" heat-treated steel pistons and heat-treated pinions.

The single-piece aluminum body is designed and tested to ANSI/BHMA A156.4 Grade 1 standards and is also backed by a 10-year warranty.

FAL SC81A FC CLOSER RWPA BLACK



SRP \$220

FAL SC81A FC CLOSER RWPA ALUM



SRP \$220

FAL SC81A FC CLOSER RWPA BRONZ



SRP \$220

FAL SC81A FC CLOSER HWPB BLACK (FRICTION HOLD OPEN ARM WITH PA BRACKET)



SRP \$243



CLOSERS

FAL SC81A FC CLOSER HWPALUM (FRICTION HOLD OPEN ARM WITH PA BRACKET)



* S C 8 1 6 8 9 H 0 *

SRP \$243

FAL SC81A FC CLOSER HWPADKBRZ (FRICTION HOLD OPEN ARM WITH PA BRACKET)



* S C 8 1 6 9 5 H 0 *

SRP \$243



LCN 1460 CLOSER

[MFG WEBSITE](#)

The LCN 1460 series is a non-handed surface mounted closer. A wide choice of options, mounting accessories and ease of installation offer maximum versatility. The LCN 1460 series has been designed to be used on metal or timber swinging commercial interior/exterior doors and is ideally suited for hospitals, nursing homes, hostels, shopping centres, commercial buildings, hotels, educational and institutional applications.

LCN 1460T series is a non-handed, slim line track arm, surface mounted closer. The LCN 1460T series has been designed to be used on metal or timber swinging commercial interior doors and is ideally suited for Apartment/Hotel/Motel doors or

CLOSERS

where aesthetics and durability are of importance.

When set to size 1 strength this closer complies with AS1428.1 of the Australian Standards (design for access and mobility).

30 year warranty

LCN 1461 CLOSER RW/PA FC 689



* 1 4 6 1 A L *

SRP \$380



LCN 4040XP Series Closer

[MFG WEBSITE](#)

The 4040XP Series is LCN's most durable surface-mounted heavy-duty closer, designed for the most demanding high-use-and-abuse applications. It meets ANSI/BHMA A156.4 Grade 1 standards and ADA reduced opening force requirements. This closer is cUL listed and UL listed for self-closing doors without hold-open and boasts a 30-year limited warranty.

The 4040XP Series features include standard non-handed plastic cover, with optional plated finish available for cover, arm and fasteners. Materials include high-strength cast-iron cylinder, forged steel arm, double heat-treated steel pinion and full complement, low friction bearing for rugged reliability in high-traffic

CLOSERS

installations.

LCN peel-n-stick templates assure quick and accurate installation, and the patented LCN Green Dial takes the guesswork out of spring force adjustments.

LCN 4040XP-62PA AL PARALLEL ARM SHOE



* 4 0 4 0 X P 6 2 P A A L *

SRP \$15

LCN 4040XP-TBWMS AL SCREW PACK,THRU BOLT, WOOD & MACH



* 4 0 4 0 X P T B W M S A L *

SRP \$25

LCN 4040XP-WMS AL SCREW PACK, WOOD & MACHINE



* 4 0 4 0 X P W M S A L *

SRP \$25

LCN 4040XP CLOSER RW/PA 689



* 4 0 4 0 X P A L *

SRP \$525

LCN 4040XP CLOSER RW/PA 695



* 4 0 4 0 X P B R Z *

SRP \$525

LCN 4040XP CLOSER CUSH 689



* 4 0 4 0 X P C U S H A L *

SRP \$595

LCN 4040XP CLOSER CUSH 695



* 4 0 4 0 X P C U S H B R Z *

SRP \$595

CLOSERS

LCN 4040XP CLOSER S-CUSH 689



SRP \$670

LCN 4040XP CLOSER SH-CUSH 689



SRP \$720

LCN 4040XP CLOSER SH-CUSH 695



SRP \$720



NORTON 8500 CLOSER

[MFG WEBSITE](#)

Features

- 8301/8501: Adjustable spring sizes 1-6
- 8301/8501: Tri-style® packaging standard (regular arm, top jamb and parallel arm mounting)
- Exceeds 25 million cycles
- Non-handed
- Staked valves
- Standard, separate and independent, latch, sweep and backcheck intensity valves
- Cast aluminum body
- Rack and pinion design
- 1-1/4" (32mm) diameter piston
- 5/8" (16mm) diameter pinion journals
- 2-1/8" (54mm) projection (standard covers)

CLOSERS

- All standard arm applications (with slim, full or metal covers) allow doors to swing 180°, conditions permitting
- 8301: shipped with slim line plastic cover
- 8501: shipped with full plastic cover

Optional Features

- Metal, architectural plastic or architectural metal covers (8500 or 8501 only)
- Lead lined metal cover - suffix MLL
- Delayed action
- Heavy duty arms: Regular Rigid, Parallel Rigid, CloserPlus®, CloserPlus Spring™, Unitrol®
- Slide tracks: push or pull side mounting

NOR 8501 CLOSER SN 689 - FULL COVER



SRP \$400

NOR 8501 CLOSER SN 690



SRP \$400



SARGENT 1431 CLOSER

[MFG WEBSITE](#)

CLOSERS

Featuring heavy-duty construction for superior strength and wear resistance, the 1431 Series Powerglide® Door Closer is ideally suited for highly trafficked environments like schools, healthcare facilities, and office and commercial buildings. With a full complement of arm types and front-facing valves, the 1431 series can be easily installed and maintained—for interior and exterior applications.

BENEFITS

- Operates effectively in extreme heat and cold without readjustment
- Meets ADA requirements in all applications except push-side track applications
- Versatile mounting permits standard, top jamb, parallel and track installations

SAR 1431 RUO CLOSER EB



SRP \$487

SAR 1431 RUO CLOSER EN



SRP \$487

SAR 1431-UO CLOSER EN



SRP \$499



CLOSERS



SARGENT 281 CLOSER

[MFG WEBSITE](#)

Designed to meet the needs of facilities maintaining “cast iron” specifications, the 281 Series Powerglide® Cast Iron Door Closer features a heavy-duty one-piece cast iron body for superior strength and wear resistance. With a full complement of arm types and front-facing valves, the 281 series can be easily installed and maintained—for interior and exterior applications.

BENEFITS

Operates effectively in extreme heat and cold without readjustment
Meets ADA requirements in all applications except push-side track applications
Versatile mounting permits standard, top jamb, parallel and track installations

SAR 281 UO CLOSER EN



* 2 8 1 U O E N *

SRP \$604

SAR 281-UH CLOSER EN



* 2 8 1 U H E N *

SRP \$662

CLOSERS



SARGENT 351 CLOSER

[MFG WEBSITE](#)

Featuring heavy-duty construction for superior strength and wear resistance, the 351 Series Powerglide® Door Closer is ideally suited for highly trafficked environments like schools, healthcare facilities, and office and commercial buildings. With a full complement of arm types and front-facing valves, the 351 series can be easily installed and maintained—for interior and exterior applications.

BENEFITS

Operates effectively in extreme heat and cold without readjustment
Meets ADA requirements in all applications except push-side track applications
Versatile mounting permits standard, top jamb, parallel and track installations

SAR 351 UO CLOSER EN (689/US28)



* 3 5 1 U O E N *

SRP \$581

SAR 351 UH CLOSER EN



* 3 5 1 U H E N *

SRP \$639

CLOSERS



SARGENT 422 CLOSER

[MFG WEBSITE](#)

Designed to meet ADA requirements in push/pull track applications, the 422 Cam Action Closer ensures that a door is light to open, but still has enough internal force to close securely even in abusive, high-traffic environments like nursing homes, healthcare facilities, schools, and office buildings.

BENEFITS

Operates effectively in extreme heat and cold without readjustment
Heavy-duty construction protects door and frame from damage
Square spindle provides simple, fool-proof arm installation

SAR 422 PCTB2 CLOSER EN LH TBCAM ACTION CLOSER, PUSH SIDE, NON HOLD OPEN, ALUMINUM ENAMEL, LEFT HANDED w/ THRU BOLTS



* 4 2 2 P C T B 2 E N L H *

SRP \$606

SAR 422 PCTB2 CLOSER EN RH TBCAM ACTION CLOSER, PUSH SIDE, NON HOLD OPEN, ALUMINUM ENAMEL, RIGHT HANDED w/ THRU BOLTS



* 4 2 2 P C T B 2 E N R H *

SRP \$606



CLOSERS



STANLEY QDC100 CLOSER

[MFG WEBSITE](#)

STANLEY Commercial Hardware QDC100

- Ultimate durability. With cast iron body construction, cold-forged pinion shaft, and forged steel arms, the QDC100 stands up to heavy use over the long term.
- Easy to retrofit. There's no need to re-prepare your door. The QDC100 has the same footprint, bolt pattern, and rounded cover as the LCN4040 so it's a simple off-and-on exchange.
- Industry-leading warranty. Each QDC100 closer comes with a lifetime mechanical warranty and a three-year warranty on finish.
- Exceeds certification standards. The QDC100 is BHMA/ANSI Grade 1 certified, and significantly exceeds performance requirements. These closers are fully adjustable, with a barrier free option to meet ADA requirements.
- Outstanding versatility. We engineered the QDC100 series with all-weather fluid, a variety of arm types and stop options, and non-handed

CLOSERS

and universal mount design, to make it easy to stock and use in a wide variety of applications.

- Premium performance standard. Get premium performance options like delayed action and a back-check valve standard with the QDC100 series.
- Proactive solutions. Innovative construction features like stacked valves prevent oil leaks from screws being accidentally backed out too far.
- Short lead time. QDC100 closers are available for immediate shipment

STA QDC111 R 689 CLOSER - Grade 1 Extra Duty Tri-Pack Arm



SRP \$402

STA QDC111 R 690 CLOSER - Grade 1, Extra Duty, Tri-Pack Arm



SRP \$402

STA QDC115 R 689 CLOSER - Grade 1 Extra Duty Arm



SRP \$434

STA QDC115 R 690 CLOSER - Grade 1 Extra Duty Arm



SRP \$434

STA QDC119 R 689 CLOSER - Grade 1

CLOSERS

Extra Duty Arm with Spring Stop



SRP \$552

STA QDC119 R 690 CLOSER - Grade 1 Extra Duty Arm with Spring Stop



SRP \$552



STANLEY QDC200 CLOSER

[MFG WEBSITE](#)

STANLEY Commercial Hardware QDC200

- Slim, but heavy duty. Constructed with cast aluminum, the QDC200 series combines a slim design with exceptional durability, making it a great choice for high-traffic, full glass doors.
- Easy to retrofit. There's no need to re-prepare your door. The QDC200 has the same footprint as the Norton 8000 series, so it's a simple off-and-on exchange.
- Industry-leading warranty. Each QDC200 closer comes with a lifetime mechanical warranty and a three-year warranty on finish.
- Exceeds certification standards. The QDC200 is BHMA/ANSI Grade 1



CLOSERS

certified, and significantly exceeds performance requirements.

- Outstanding versatility. We engineered the QDC200 series to be fully adjustable and usable on both interior and exterior doors. All-weather fluid, a variety of feature options, and nonhanded and universal mount flexibility make it easy to stock and use the QDC200 in a wide variety of applications.
- Premium performance standard. Get premium performance options like delayed action and a back check valve standard with the QDC200 series.
- Short lead time. QDC200 closers are available for immediate shipment. Designed for flexibility and easy retrofitting, the QDC200 delivers the quality and versatility you need for narrow top rail doors in hightraffic applications.

STA QDC211 FC 689 CLOSER - Grade 1 Heavy Duty Tri-Pack Arm



* Q D C 2 1 1 F 6 8 9 *

SRP \$277

STA QDC211 FC 690 CLOSER - Grade 1 Heavy Duty Tri-Pack Arm



* Q D C 2 1 1 F 6 9 0 *

SRP \$277

CLOSERS



STANLEY QDC300 CLOSER

[MFG WEBSITE](#)

QDC300: Standard Duty Door Closers
We engineered the QDC300 Series with the same high-performance materials and construction you expect from STANLEY, but in a smaller body. The smaller, narrower footprint of the QDC300 means you can put STANLEY quality on even the narrowest top rail doors. The QDC300 Series includes many premium design components standard, without costly upcharges. And with a wide range of available options and customizable features, the QDC300 provides flexible value without compromising quality.

STA QDC311 NC 689 CLOSER - Grade 1 Standard Duty Tri-Pack Arm, No cover



* Q D C 3 1 1 N C 6 8 9 *

SRP \$224

STA QDC311 NC 690 CLOSER - Grade 1 Standard Duty Tri-Pack Arm, No cover



* Q D C 3 1 1 N C 6 9 0 *

SRP \$224

CLOSERS



YALE 2700 CLOSER

[MFG WEBSITE](#)

Yale 2700 Series Architectural Door Closers are ideal for commercial applications where ease of use, installation and aesthetics are required at an economical price. The 2700 Series features rugged construction, adjustments for backcheck, closing and latch speed, and rack and pinion operation.

Features

Adjustable spring sizes 1-6
Non-handed
Aluminum
Tri-packed: regular, parallel or top jamb mounting
Full plastic cover
Hold open and heavy-duty arms available
Sleeve nuts furnished standard with all models
Optional fasteners: Thrubolts and grommet nuts

YAL 2701 SN 689 CLOSER - Rw/PA



* 2 7 0 1 6 8 9 *

SRP \$245

YAL 2701 SN 690 CLOSER - Rw/PA

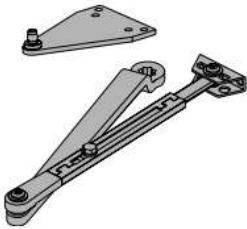


* 2 7 0 1 6 9 0 *

SRP \$245



CLOSERS/ CLOSER ARMS



FALCON SC80A PARALLEL ARM WITH BRACKET

[MFG WEBSITE](#)

Regular arm, SC80A-3077PA
Non-handed arm with adjustable forearm assembly to accommodate a range of doors and frame reveal conditions. MoUnts hinge side, top jamb or parallel arm. PA shoe included to allow installation in a parallel arm configuration.

FAL SC81A-3077/PA 689 REGULAR ARM W/PA BRACKET



* S C 8 1 A 3 0 7 7 P A 6 8 9 *

SRP \$66

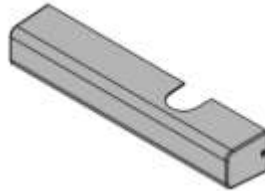
FAL SC81A-3077/PA 695 REGULAR ARM W/PA BRACKET



* S C 8 1 A 3 0 7 7 P A 6 9 5 *

SRP \$66

CLOSERS/ COVER



FALCON SC80A SLIM COVER

[MFG WEBSITE](#)

SC80A-72
Slim line plastic cover
Non-handed

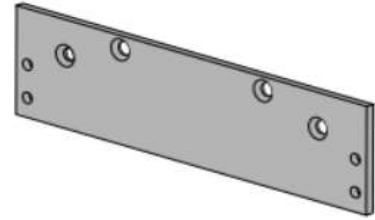
FAL SC80A-72 689 SLIM COVER



* S C 8 0 7 2 6 8 9 *

SRP \$12

CLOSERS/ DROP PLATES



[MFG WEBSITE](#)

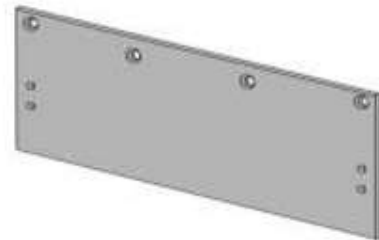
Required for top jamb mounting wherehead frame is less than 1 3/4" (44mm).

FAL SC60-18 DROP PLATE BRONZE - For use with Top Jamb installation where face of frame is less than 1-3/4"



* S C 6 0 - 1 8 - 6 9 5 *

SRP \$34



FALCON SC60A-18 PA DROP PLATES

[MFG WEBSITE](#)

Required for parallel arm mounting where top rail is less than 4 3/8" (111mm) for PA, 4 1/4" (108mm) for HD and DS, measured from the stop. Plate requires 2 3/8" (60mm) minimum top rail measured from stop.

FAL SC60-18PA DROP PLATE ALUM - For use with parallel arm mount installation when top rail of door is too narrow



* S C 6 0 - 1 8 P A - 6 8 9 *

SRP \$34



CLOSERS/ DROP PLATES

FAL SC60-18PA DROP PLATE BRONZE -
For use with parallel arm mount
installation when top rail of door is too
narrow



* S C 6 0 - 1 8 P A - 6 9 5 *

SRP \$34



FALCON SC80A DROP PLATES

[MFG WEBSITE](#)

Required for parallel arm mounting
where top rail is less than 4 3/8"
(111mm),
measured from the stop. Plate
requires 1 7/8" (48mm) minimum top
rail measured from stop.

FAL SC80-18 DROP PLATE 689



* S C 8 0 1 8 6 8 9 *

SRP \$34

FAL SC80-18 DROP PLATE 695



* S C 8 0 1 8 6 9 5 *

SRP \$34

FAL SC80A-18PA DROP PLATE 695



* S C 8 0 1 8 P A 6 9 5 *

SRP \$34

CLOSERS/ DROP PLATES



FALCON SC80A PA DROP PLATES

[MFG WEBSITE](#)

Required for parallel arm mounting
where top rail is less than 4 3/8"
(111mm), measured from the stop.
Plate requires 1 7/8" (48mm)
minimum top rail measured from
stop.

FAL SC80A-18PA DROP PLATE 689



* S C 8 0 1 8 P A 6 8 9 *

SRP \$34

CLOSERS/MOUNTING PLATE



[MFG WEBSITE](#)

Base Material : Steel
Size : 3 1/4" height x 13" width x 1/4"
thickness
Handing : Non-handed
Application: Used for regular arm
mounting when the top rail is too
narrow to allow the closer to be
mounted directly to the door surface
Finishes : AL, BZ, GLD painted finishes
Prepared Holes : Screw holes drilled
& tapped for closer mounting &
countersunk for installation to frame
or door
Fasteners : Machine, wood and self
tapping machine screws
Warranty : Limited lifetime warranty

**DHW 316R MOUNTING PLATE AL - RETRO FIT
PLATE w/SCREWS (Closer sold separately)**



* 3 1 6 R . M P . A L *

SRP \$60



**CLOSERS\MULLION
BRACKET**



**DESIGN HARDWARE
MULLION BRACKET**

[MFG WEBSITE](#)

Base Material: Aluminum
Dimensions: 2" x 1 1/2" x 1/4"
Application: Optional accessory for use with KRM Mullions when installing on a narrow transom frame. Provides the extra surface area needed to properly install mullion.
Fasteners: Machine screws & Wood Screw
Finishes: AL Painted (prime coat)
Warranty: Limited Lifetime Warranty

DHW AB1 AL MULLION ANGLE BRACKET



* A B 1 . A L *

SRP \$28